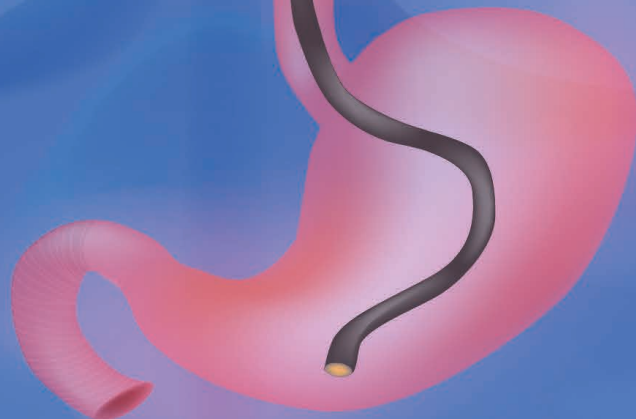




QMD™ now offers new Nasogastric Tubes as part of the BIOMETRIX™ Enteral Feeding product portfolio. The Nasogastric Tube features ENFit® design to reduce the risk of misconnections and increase patient safety. The product range offers a comprehensive portfolio for both adult and pediatric patients.

BIOMETRIX™
NASOGASTRIC FEEDING
TUBES



PRODUCT DESCRIPTION

A Nasogastric Feeding Tube (NG) is a flexible device designated for patients who require intermittent or continuous feeding and/or medication delivery.

The **BIOMETRIX™** line of Single-Port and Bi-Port Nasogastric Feeding Tubes are manufactured from high grade **biocompatible radiopaque polyurethane** designed to comply with ENFit® connection standards for improved patient safety.



MAIN FEATURES:

- **Proximal Y-site connector** that allows for tube flushing and adding medication without disconnecting the feeding set
- **Large holes and open distal end** provide good fluid flow and minimizes clogging
- **Hydrophilic material** for easy insertion and increase of patient comfort
- **Radiopaque stripe** gives reference markings
- **Weighted/Non-Weighted, with and without stylet designs**
- **Pediatric & Adult range**

Product Catalog

| Product Number | Product Description | Size (FR) | Length (mm) | Weight | Stylet | Sterile | Box Qty. |
|----------------|---|-----------|-------------|--------|--------|---------|----------|
| RE-NG105050 | Nasogastric Feeding Tubes Single Port-Pediatric | 5 | 500 | No | No | Yes | 25 Units |
| RE-NG106050S | | 6 | 500 | No | Yes | Yes | 25 Units |
| RE-NG106090S | | 6 | 900 | No | Yes | Yes | 25 Units |
| RE-NG208120S | Nasogastric Feeding Tubes Double Port | 8 | 1,200 | No | Yes | Yes | 25 Units |
| RE-NG208120SW | | 8 | 1,200 | Yes | Yes | Yes | 25 Units |
| RE-NG210120S | | 10 | 1,200 | No | Yes | Yes | 25 Units |
| RE-NG210120SW | | 10 | 1,200 | Yes | Yes | Yes | 25 Units |
| RE-NG212120S | | 12 | 1,200 | No | Yes | Yes | 25 Units |
| RE-NG212120SW | | 12 | 1,200 | Yes | Yes | Yes | 25 Units |
| RE-NG212120 | | 12 | 1,200 | No | No | Yes | 25 Units |
| RE-NG214120S | | 14 | 1,200 | No | Yes | Yes | 25 Units |
| RE-NG214120 | | 14 | 1,200 | No | No | Yes | 25 Units |

CONTACT US >>>



BIOMETRIX™ Products
Performance for Life



| www.qco.net/qmd



| qmeddevices@qco.net



| GLOBAL HEADQUARTERS
30100 Chagrin Blvd.
Suite 201
Pepper Pike, OH 44124
USA